

**OLYMPUS**<sup>®</sup>

Your Vision, Our Future



**OES 60 BRONCHOFIBERSCOPES**

**Fiberoptic Bronchoscopy Redefined, Once Again**

# Fiberoptic bronchoscopy still has a lot to offer — that's why we're introducing the all-new OES-60 bronchofiberscope lineup

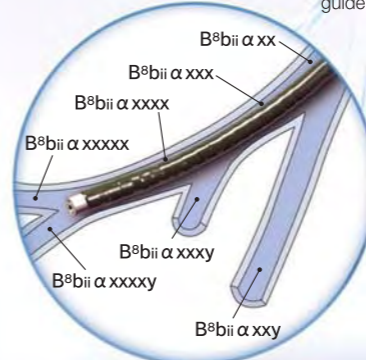
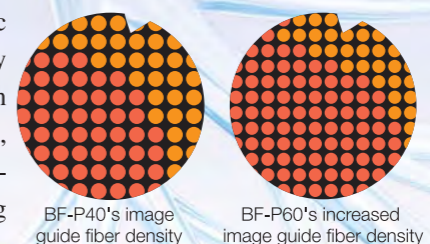
## A new direction in the evolution of bronchoscopy

At OLYMPUS, we remain committed to developing fiberoptic bronchoscopes that contributes to higher levels of diagnostic accuracy while maintaining the proven advantages of fiberoptics. With the incidence of respiratory diseases increasing worldwide, the importance of that commitment is more apparent now than ever. To meet the fast-growing demand for high-precision bronchoscopic examination and treatment instruments, we have developed a radically new line of advanced bronchoscopes that offer an improvement in insertability, are wider on the inside, and deliver higher image quality. Featuring four different scopes, the new BF-60 Series represents a dramatic leap forward in the evolution of bronchoscopic performance. Not only do these new scopes enable more effective observation, diagnosis, and treatment throughout the tracheobronchial tree — from the central bronchi to the peripheral bronchi — their compact, ergonomic designs minimize space requirements, making them ideal for emergency rooms or facilities with smaller case loads.

## Meeting the challenge

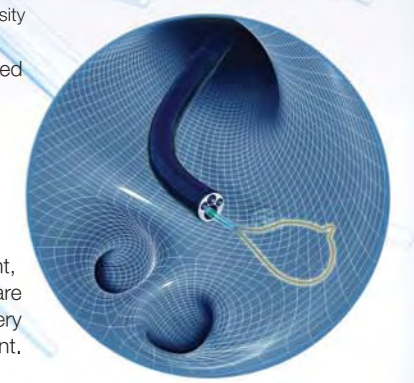
Fiberoptic bronchoscopy's continuing importance in the future makes it crucial that we continue to refine and improve this vital technology. Epitomizing OLYMPUS' renowned fiberoptic and precision technology, our new OES-60 lineup has been specifically designed to strengthen the advantages inherent to fiberoptic bronchoscopes and enable them to respond even more effectively to the diagnostic requirements of respiratory diseases. For deeper insertion into the peripheral bronchi, there's the super-slim BF-XP60 with a reduced bending

radius. For biopsies, there's the new BF-MP60, which features a large instrument channel that can accommodate standard forceps. For superior image quality, there's the BF-P60, which incorporates many more image guide fibers than its predecessor to deliver images that are virtually free of dot patterns. And, for more demanding therapeutic requirements, there's the BF-1T60, which has an extra-wide instrument channel that can handle 2.8 mm diameter forceps and provides increased suction power.

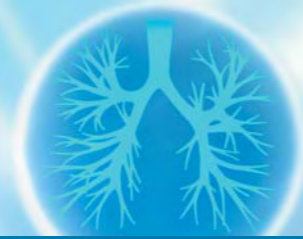


The super-slim BF-XP60's reduced bending radius makes insertion into the peripheral bronchi even easier.

In addition to laser treatment, the BF-P60 and BF-1T60 are compatible with electrocautery treatment.



# OLYMPUS BF TYPE P60

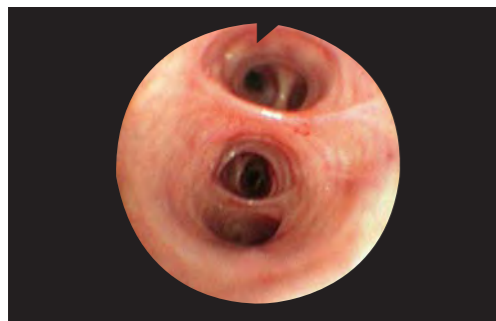


# OLYMPUS BF TYPE 1T60



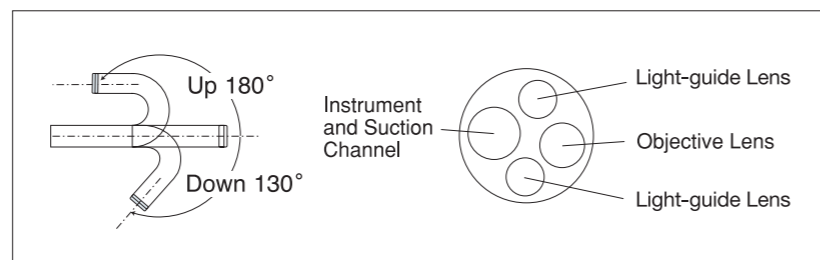
## With more image guide fibers, this routine scope offers enhanced image quality and excellent performance

To provide the level of image quality today's bronchial applications demand, the BF-P60's image guide incorporates more optical fibers than its predecessor, producing sharper, smoother pictures with less moiré. This enhanced image quality is supported by a wide 120° field of view that brings more of the target site into view, as well as 180° up/130° down angulation that makes it easier to maneuver the scope in the bronchi and access the target site. With a distal-end diameter of only 4.9 mm, a 2.2 mm wide inner channel, compatibility with electrocautery treatment, and OES and EVIS video system connectivity, this scope is ideal for a wide range of routine applications.



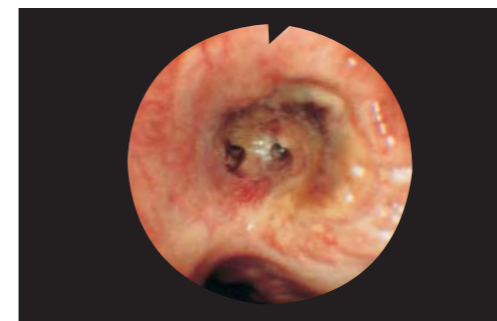
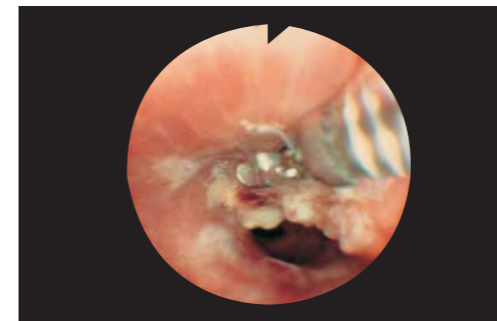
### Specifications

Optical System	Field of view	120°
	Direction of view	Forward viewing
	Depth of field	3~50 mm
Insertion Tube	Distal end outer diameter	4.9 mm
	Insertion tube outer diameter	5.0 mm
	Working length	600 mm
Instrument Channel	Channel inner diameter	2.2 mm
	Minimum visible distance	5 mm from distal end
Bending Section	Angulation range	Up 180°, Down 130°
Total Length		900 mm



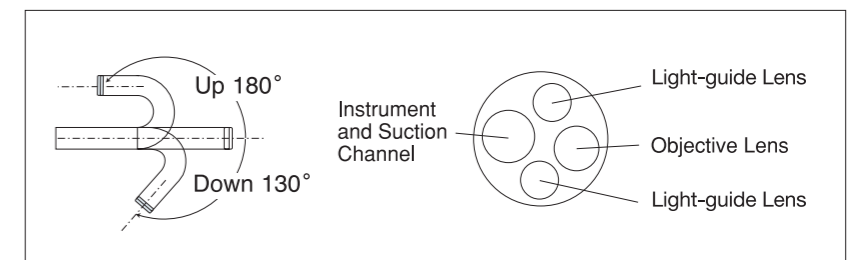
## Extra-wide channel accommodates 2.8 mm diameter forceps, greatly enhancing therapeutic capability

Equipped with an extra-wide instrument channel measuring a full 3.0 mm across, the BF-1T60 can easily accommodate 2.8 mm diameter forceps and offers increased suction power. The BF-1T60 achieves this without giving up the slim 5.9 mm distal end diameter of its predecessor. Add to that a wide 120° field of view, 180° up/130° down angulation, and a 600 mm working length, and the result is a scope that enables accurate observation of a wider area, is easier to maneuver in the tracheobronchial tree, and delivers exceptional therapeutic capability. Fully compatible with electrocautery treatment, this scope can be connected to both OES and EVIS video systems.

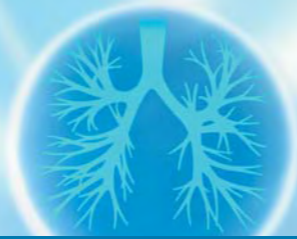


### Specifications

Optical System	Field of view	120°
	Direction of view	Forward viewing
	Depth of field	3~50 mm
Insertion Tube	Distal end outer diameter	5.9 mm
	Insertion tube outer diameter	6.0 mm
	Working length	600 mm
Instrument Channel	Channel inner diameter	3.0 mm
	Minimum visible distance	5 mm from distal end
Bending Section	Angulation range	Up 180°, Down 130°
Total Length		900 mm



# OLYMPUS BF TYPE MP60

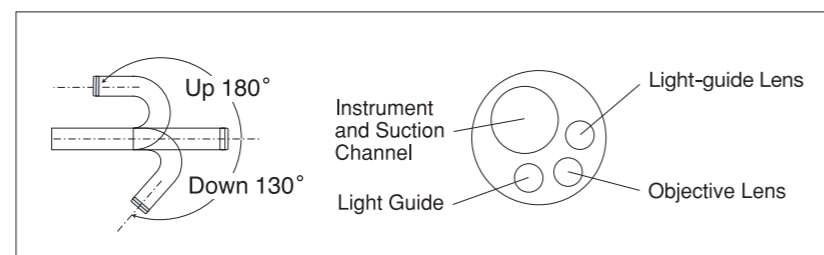


## Ingenious design incorporates a wide 2.0 mm channel with an outer diameter of only 4.0 mm at the distal end

Thanks to our precision design technology, we have succeeded in creating a scope that measures a mere 4.0 mm across at the distal end and 4.4 mm at the insertion tube. Incredibly, this scope also incorporates a large 2.0 mm-wide instrument channel able to accommodate standard forceps for use in peripheral lung biopsies. Compatible with both OES and EVIS video systems and boasting a wide 120° field of view for clear observation of a wider area and 180° up and 130° down angulation for easier maneuvering in the bronchi, the versatile BF-MP60 is an excellent choice for tracheobronchial applications.

### Specifications

Optical System	Field of view	120°
	Direction of view	Forward viewing
	Depth of field	3~50 mm
Insertion Tube	Distal end outer diameter	4.0 mm
	Insertion tube outer diameter	4.4 mm
	Working length	600 mm
Instrument Channel	Channel inner diameter	2.0 mm
	Minimum visible distance	3 mm from distal end
Bending Section	Angulation range	Up 180°, Down 130°
Total Length		900 mm

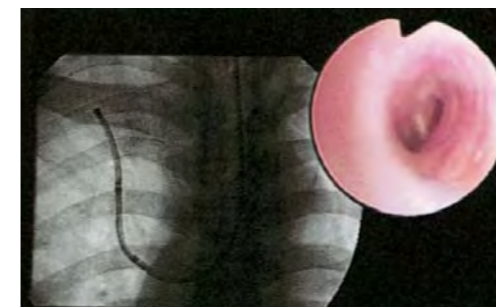


# OLYMPUS BF TYPE XP60



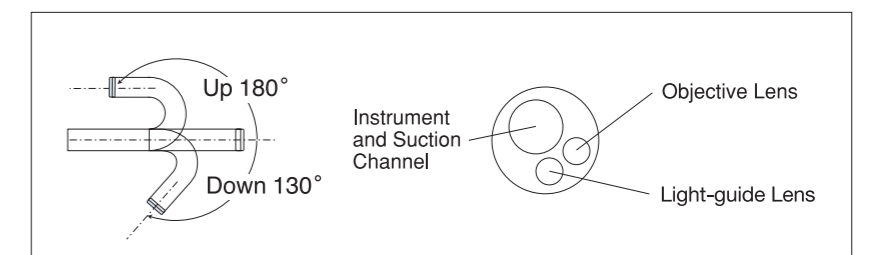
## Super-slim 2.8 mm diameter and reduced bending radius offer unprecedented insertion capability

With a reduced bending radius than its predecessors and an extra-slim design that's only 2.8 mm across at both the distal end and insertion tube, the BF-XP60 puts even the outermost peripheral bronchi within reach. Remarkably, despite its ultra-slim design, the BF-XP60 incorporates an instrument channel measuring 1.2 mm across. And, like its larger companion models, performance has been optimized with features like a wide 90° field of view, 180° up and 130° down angulation, and OES and EVIS video system connectivity.

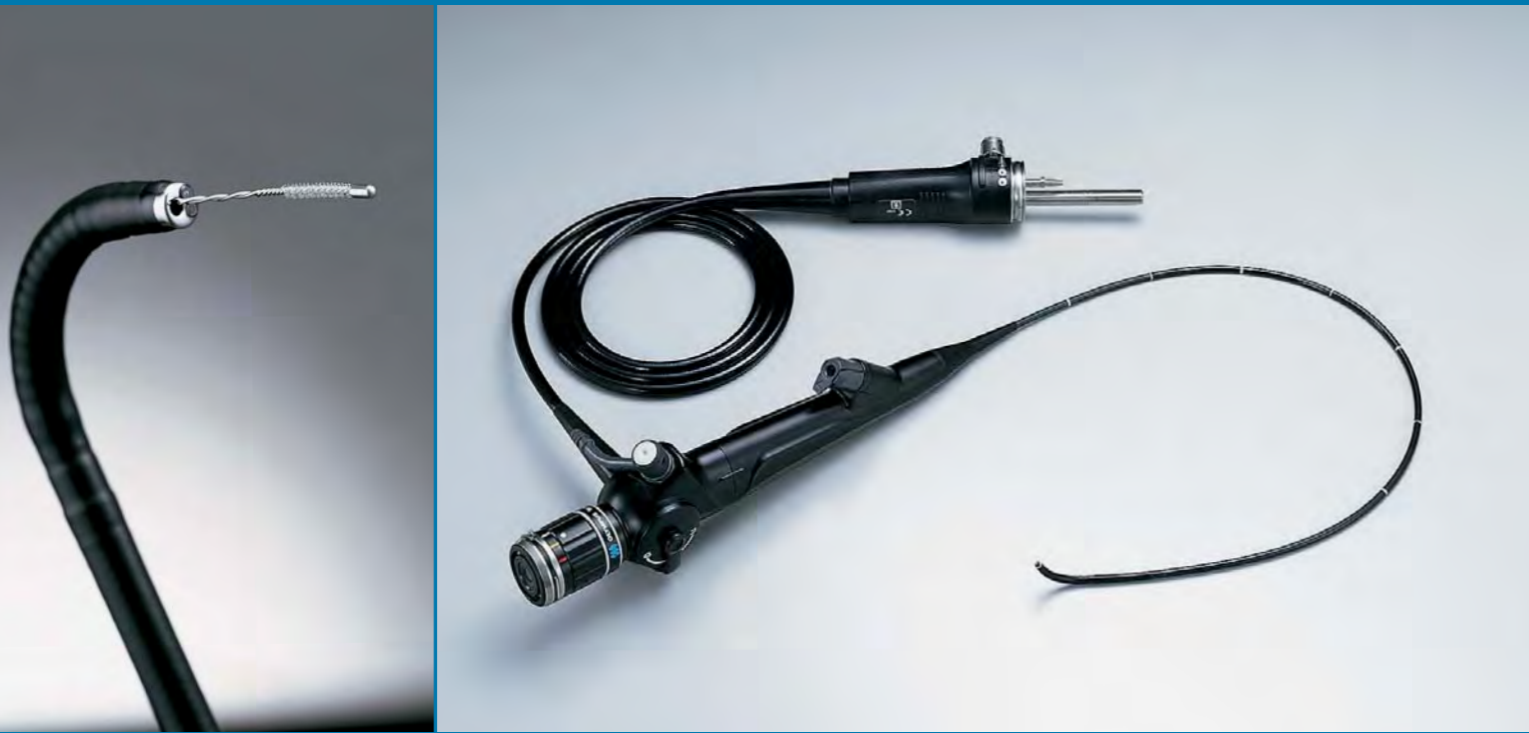


### Specifications

Optical System	Field of view	90°
	Direction of view	Forward viewing
	Depth of field	2~50 mm
Insertion Tube	Distal end outer diameter	2.8 mm
	Insertion tube outer diameter	2.8 mm
	Working length	600 mm
Instrument Channel	Channel inner diameter	1.2 mm
	Minimum visible distance	1.5 mm from distal end
Bending Section	Angulation range	Up 180°, Down 130°
Total Length		910 mm



# OLYMPUS BF TYPE 3C40

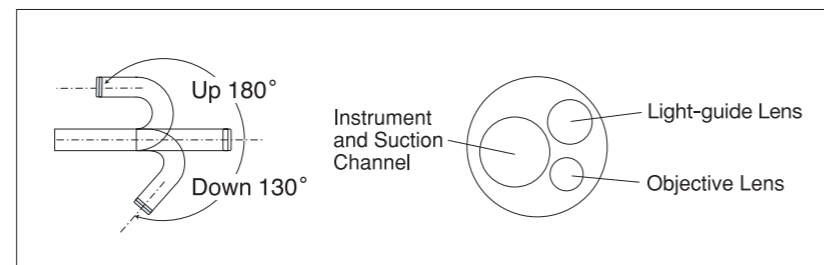


## 3.3 mm slim bronchoscope designed for better performance

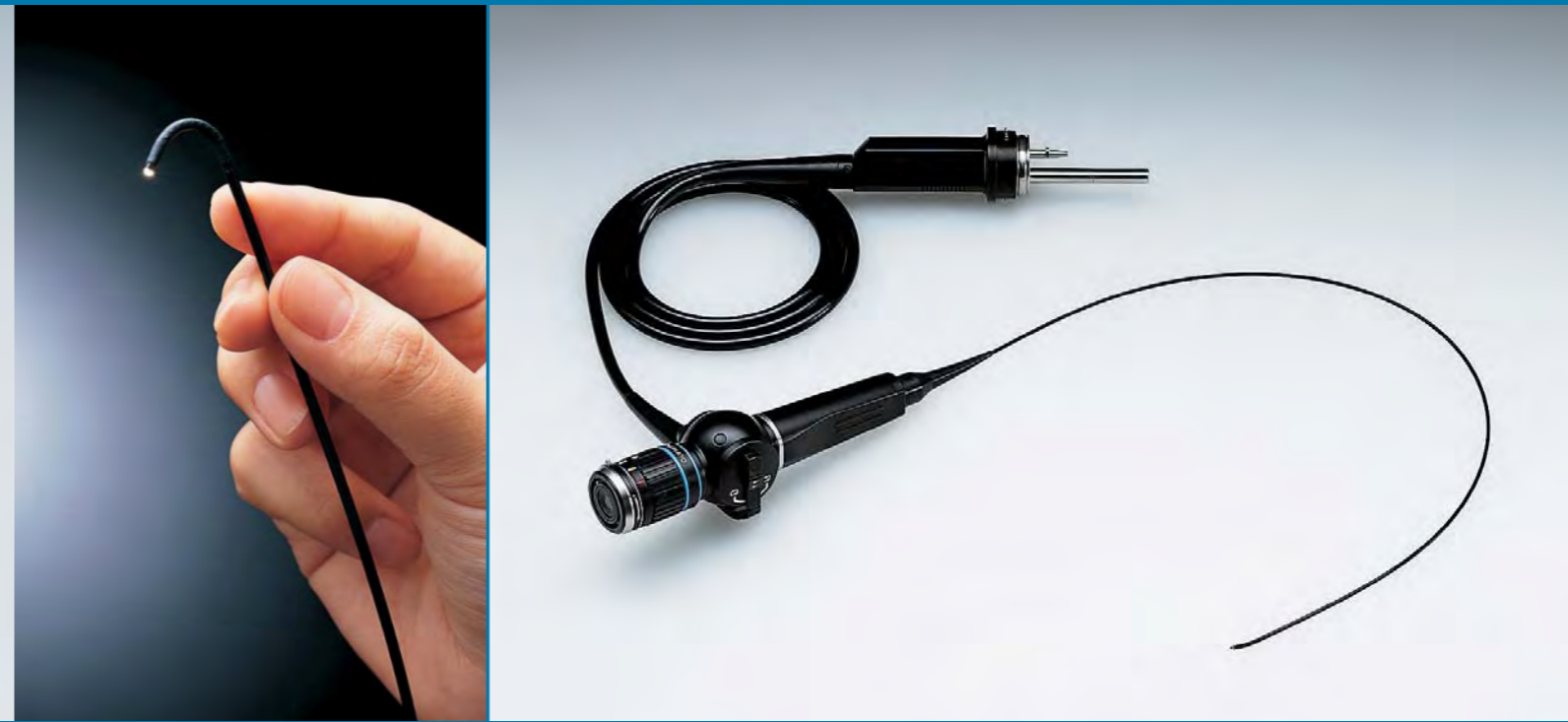
Despite a super-slim design with a distal end that measures only 3.3 mm across, the BF-3C40 delivers outstanding optical performance thanks to the use of extra-fine optical fibers. So not only does the BF-3C40 expand the applicable range of children's bronchi and allow you to penetrate even farther into the bronchial tree, it lets you see more clearly as well. The BF-3C40's high-resolution images are bigger, sharper, and clearer with reduced dot patterns.

### Specifications

Optical System	Field of view	120°
	Depth of field	3~50 mm
Insertion Tube	Distal end outer diameter	3.3 mm
	Insertion tube outer diameter	3.6 mm
	Working length	550 mm
Instrument Channel	Channel inner diameter	1.2 mm
	Minimum visible distance	3 mm from distal end
Bending Section	Angulation range	Up 180°, Down 130°
Total Length		840 mm

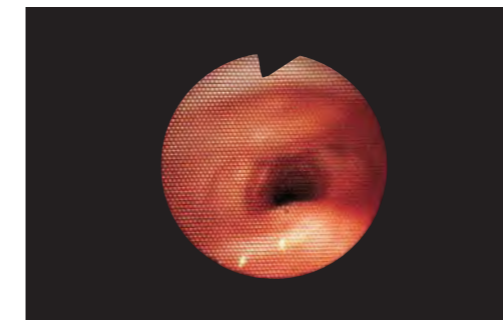


# OLYMPUS BF TYPE N20



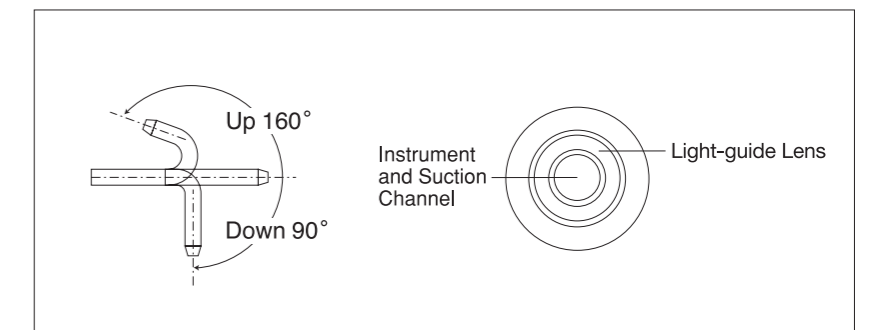
## Ultra-slim bronchoscope with a 2.2 mm insertion tube

Measuring a hair-thin 1.8 mm in diameter at the distal tip and 2.2 mm in diameter at the insertion tube, the BF-N20 is uniquely suited to diagnosis of respiratory tract diseases in neonates and infants. Despite the super-slim design, this scope provides remarkably bright, sharp images thanks to the use of OLYMPUS' exclusive high-resolution image guide fibers. Distal end angulation of 160° up and 90° down further supports accurate diagnosis.



### Specifications

Optical System	Field of view	75°
	Depth of field	2~50 mm
Insertion Tube	Distal end outer diameter	1.8 mm
	Insertion tube outer diameter	2.2 mm
	Working length	550 mm
Bending Section	Angulation range	Up 160°, Down 90°
Total Length		840 mm



# A versatile electrosurgical unit featuring multiple cutting and coagulation modes and a reliable, safety-oriented design

Electrosurgery produces less surgical smoke or fumes than laser treatment, ensuring a clear field of view throughout the procedure. Now, OLYMPUS, the world's first manufacturer to develop an electrosurgical unit compatible with flexible endoscopes, is introducing the PSD-30. Designed to achieve maximum effectiveness and reliability in treatment of the tracheobronchial tree, the PSD-30 comes with three cutting modes and three coagulation modes to provide bronchoscopists with the flexibility they need to meet the demands of any procedure. Comprehensive safety functions and an auto shut-off feature ensure reliability, while a wide selection of dedicated accessories help facilitate safe, accurate treatment.



## PSD-30

### Three cutting modes enable optimization of cutting and hemostasis for each treatment

- **Pure:** Designed for quick cutting.
- **Blend 1:** Designed for moderate cutting and hemostasis.
- **Blend 2:** Designed for cutting with strong coagulation capability.

With the PSD-30, there's no need to go through the set-up procedure each time you use it. Various setting values and the selected cutting mode can be stored on a memory card, so you can instantly call up the settings you need when you need them.



### Three coagulation modes offer a wide range of hemostatic capabilities

- **Forced:** Designed for comparatively strong coagulation and hemostatic effects.
- **Auto Stop:** Designed to reduce tissue carbonization and invasion. Output is automatically stopped upon reaching a certain degree of coagulation during Soft coagulation.
- **Soft:** Designed to stop light bleeding, as well as mark tissues using snares. Very little tissue carbonization occurs in this mode.



### Excellent output characteristics

The PSD-30 provides excellent cutting and coagulation performance with output characteristics adjusted to the impedance rates appropriate for electrosurgical treatments.

### Functions to improve reliability

#### Warning and automatic output-stop on malfunction detection

The PSD-30 is able to detect bad connections or breaks in the P-plate or S-cord and differences between the actual and set outputs, as well as short circuits in the foot switch. Self-diagnostic functions such as the CQM (Contact Quality Monitor) detect if a divided P-plate is properly attached to the patient. If a malfunction occurs, an alarm sounds and a warning indicator lights up. At the same time, the Double Safety Mechanism is activated to disable high-frequency output.

#### Stand-by mode and continuous output observation timer for burn prevention

When continuous output is maintained beyond a certain time limit, an alarm sounds and a warning indicator lights up. If output is not stopped at this point, the output observation timer automatically disables output. When output is not required during treatment, the Stand-by mode can be engaged to disable both high-frequency output and prevent changes to various settings.

## OLYMPUS' full line of bronchoscopic electrosurgery accessories

#### Electrosurgical Snare

For polypectomy and removal of tumors.



#### Electrosurgical Probe

Enables local cauterization of tumor surfaces to achieve hemostasis.



#### Hot Biopsy Forceps

For quick, accurate resection of tissue using cauterization.



#### Electrosurgical Knife

Unique configuration for effective cauterization.



# Ancillary Equipment



## OTV-S7V | CLV-S40

**VISERA Video System Center | VISERA Xenon Light Source**

Crisp, clear details and outstanding brightness and clarity provided by our high-performance video system will make your work much easier. Excellent system expandability and a powerful light source with a 300-watt long-life xenon lamp make this system the ideal complement to your scope.



## CLV-U40

**EVIS Universal Light Source**

The CLV-U40 is a versatile xenon light source that can be used with EVIS and rigid scope systems, as well as OES systems. With its high light intensity, the CLV-U40 enhances in-depth observation with clearer, more vividly detailed image. With its power, durability, and performance, the CLV-U40 makes an ideal light source for virtually any endoscopic application.



## OEP-4

**Color Video Printer**

Thanks to HDTV compatibility, the finest details in endoscopic images are accurately reproduced.



## TC-C2

**Bronchoscopic Trolley**

Especially designed for bronchoscopy, the TC-C2 is everything needed to set up and operate a fully equipped bronchoscopy system. The compact, lightweight design makes it easy to move around within a bronchoscopy suite as well as from room to room.



## CLK-4

**Halogen Light Source**

This 150-watt halogen lamp provides bright, color-balanced illumination. Provided with an air pump for insufflation and irrigation, this light source is ideally suited for use in doctors' offices or exam rooms where space is limited or when an easily transportable system is required.



## KV-5

**Endoscopic Suction Pump**

The KV-5 is a multipurpose suction pump featuring variable suction control, powerful suction capability, and a large-capacity suction bottle. Ideal for use in both endoscopy suites and operating rooms, the KV-5 also boasts "whisper quiet" operation.

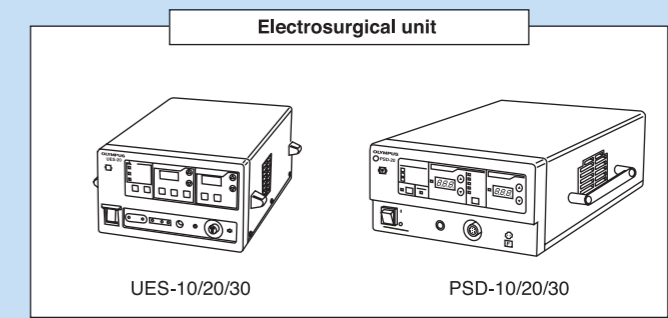
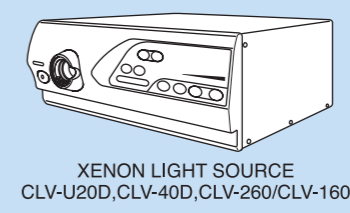
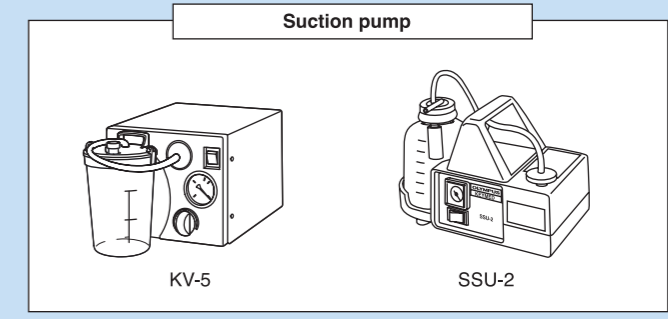
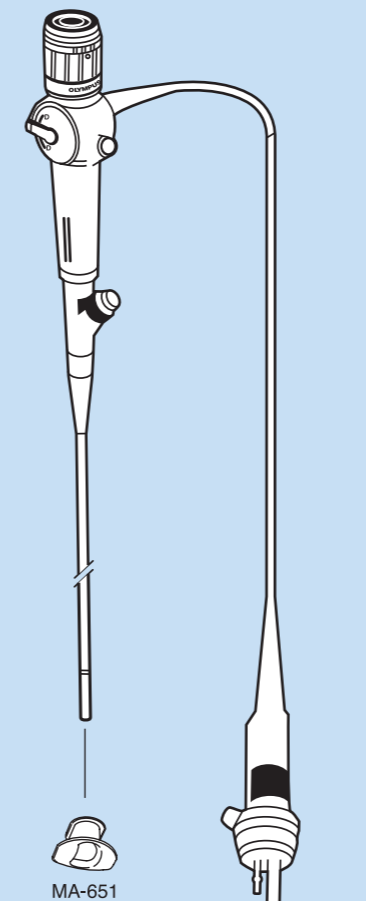
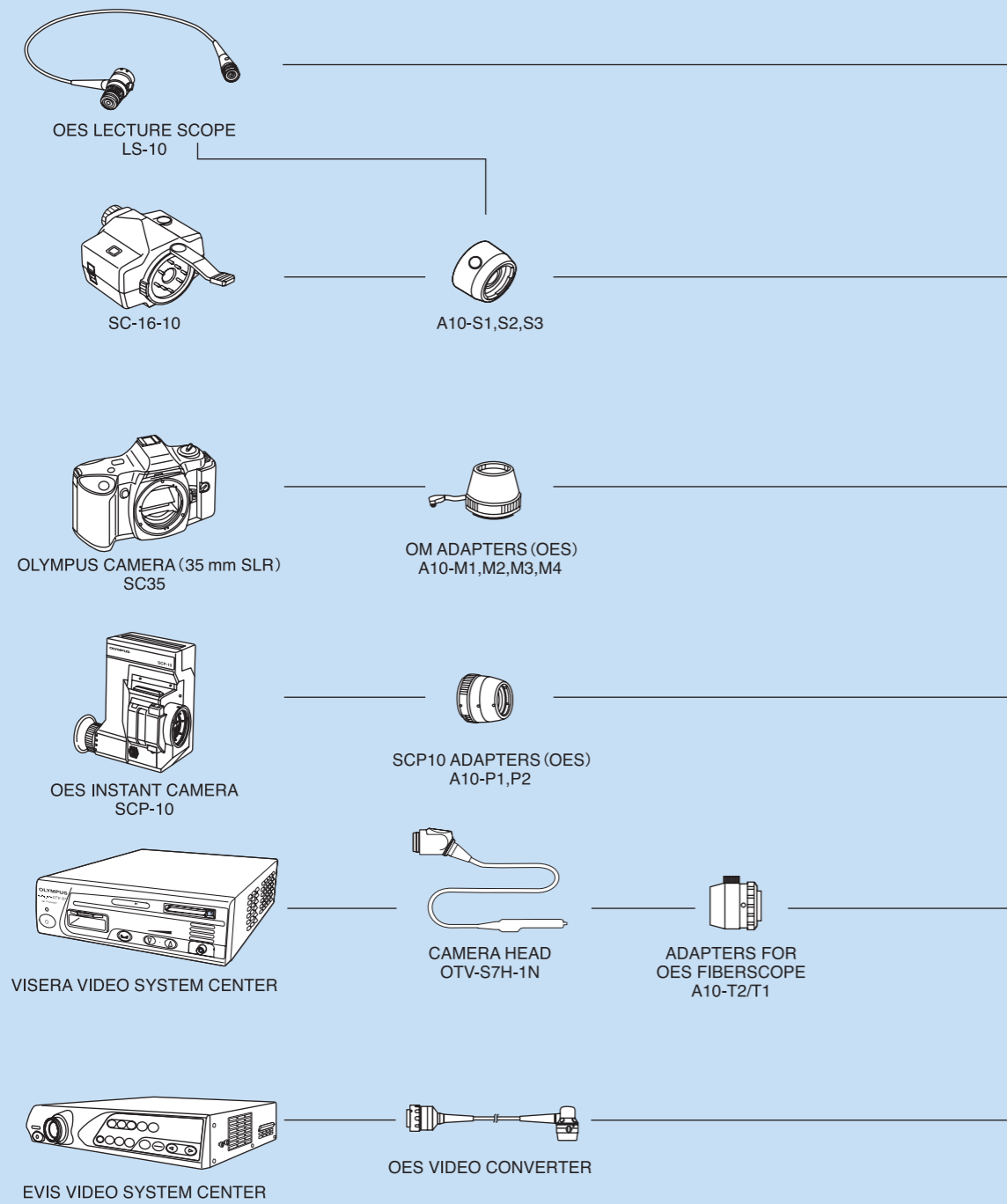


## OEV261H

**26-inch Full HD LCD Monitor**

26-inch full HD LCD panel (WUXGA 1920x1200) with a 16:10 aspect ratio, high contrast and wide viewing angle reproduces the sharpest possible images. Color tones completely calibrated for use with OLYMPUS' flexible and rigid endoscopes. Any images from compatible modalities can be displayed with Picture-in-Picture (PIP) or Picture-out-Picture (POP) function.

# OES-60 System Chart





Specifications, design and accessories are subject to change without any notice or obligation on the part of the manufacturer.



**OLYMPUS MEDICAL SYSTEMS CORP.**  
Shinjuku Monolith, 2-3-1 Nishi-Shinjuku, Shinjuku-ku, Tokyo 163-0914, Japan

For a complete listing of  
sales and distribution locations visit:  
[www.olympus.com](http://www.olympus.com)

Printed in Japan F0192E2-032012