

OLYMPUS[®]

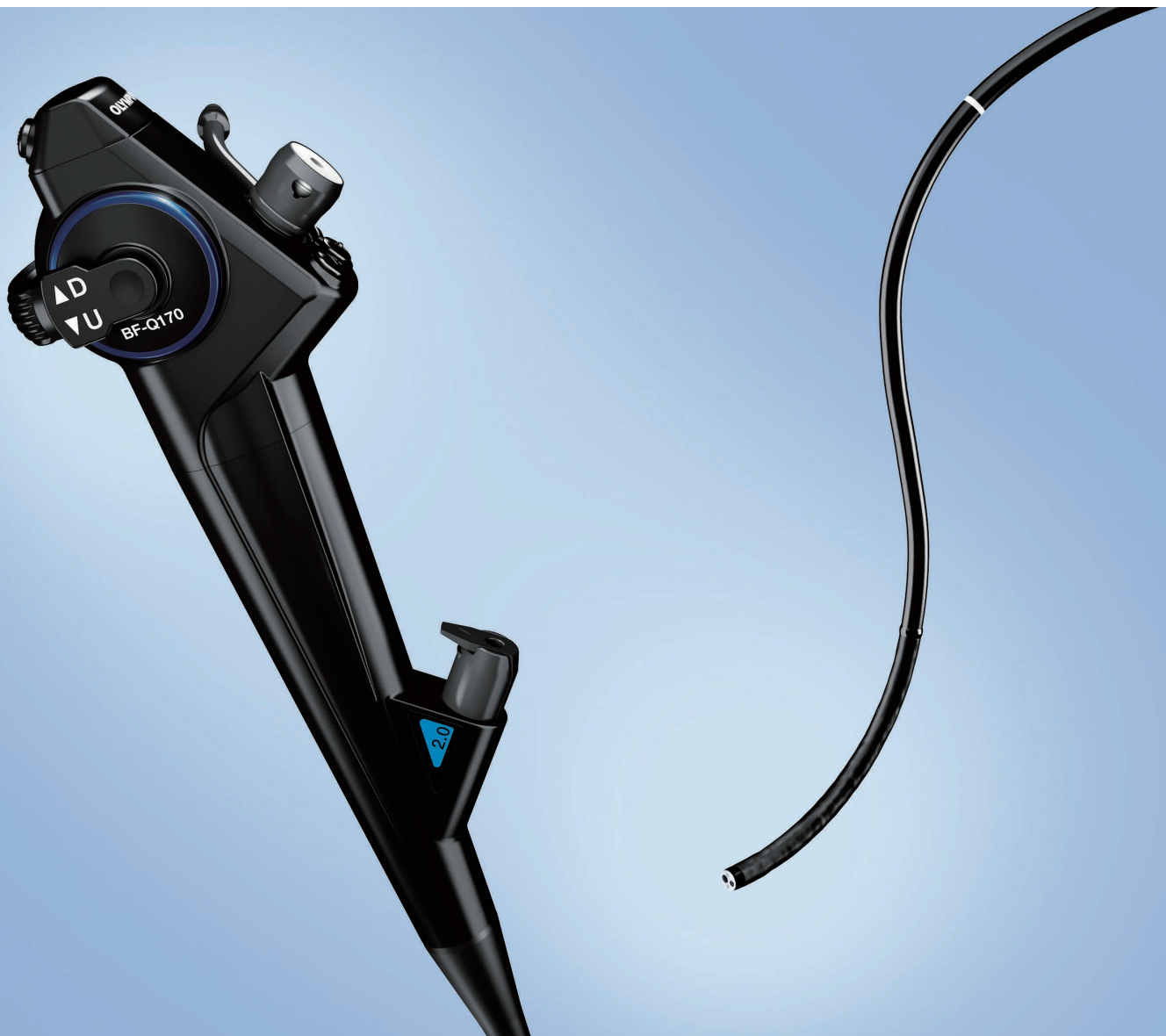
Your Vision, Our Future

Optera

BRONCHOVIDEOSCOPE

BF-Q170

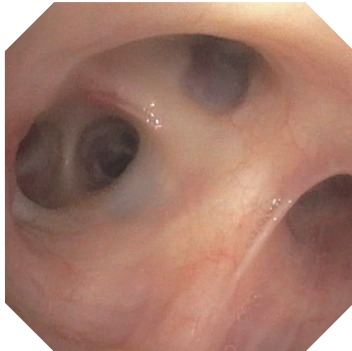
Exceptional performance — delivering a high-resolution image in a slim 4.8 mm diameter



Main Features

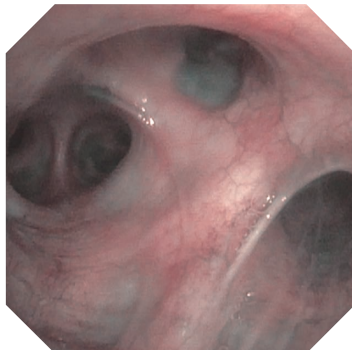
Excellent image quality

High-resolution image quality.



NBI (Narrow Band Imaging)

NBI is an optical image enhancement technology that improves the visualization of vessels on the mucosal surface.



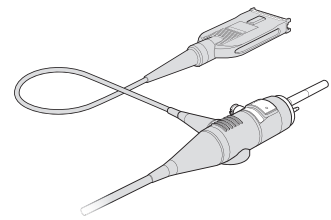
Slimmer outer diameter

Featuring slimmer design than previous scope BF-P150*, the 4.8 mm distal end outer diameter helps support insertion to bronchi, while maintaining a 2.0 mm instrument channel for a diverse range of purposes.

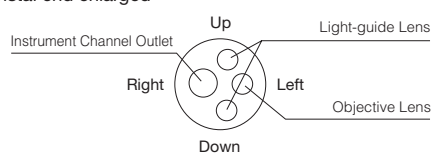
*Bronchovideoscope OLYMPUS BF TYPE P150

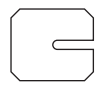
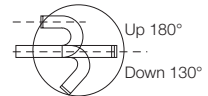
Waterproof connector

The newly designed connector is fully submersible and therefore eliminates the need for a water-resistant cap, while minimizing the risk of damage due to accidental immersion.



Specifications

Optical System	Field of view	120°
	Direction of view	Forward viewing
	Depth of field	3-100 mm
	Image quality	Q-image
Insertion Tube	Distal end outer diameter	4.8 mm
	Distal end enlarged	
		
	Insertion tube outer diameter	4.9 mm
	Working length	600 mm

Instrument Channel	Channel inner diameter	2.0 mm
	Minimum visible length	3.0 mm from the distal end
Bending Section	Direction from which EndoTherapy accessories enter and exit the endoscopic image	
	Angulation range	

Endoscopic images were taken by an equivalent image quality model (EVIS EXERA III Bronchovideoscope OLYMPUS BF-Q190). Specifications, design and accessories are subject to change without any notice or obligation on the part of the manufacturer.