

**OLYMPUS**<sup>®</sup>

Your Vision, Our Future

**EVIS LUCERA  
ELITE**

EVIS LUCERA ELITE COLONOVIDEOSCOPE

**CF-H290L/I**

High-performance routine colonoscope with HDTV and RIT for superior imaging and handling

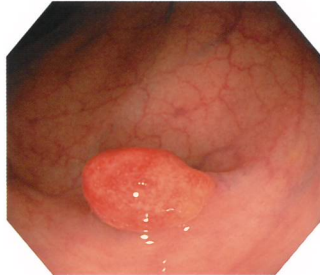




## Main Features

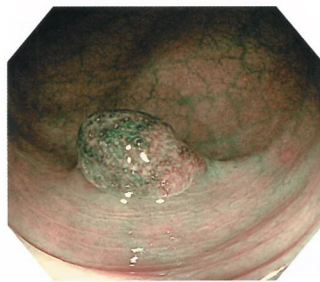
### HDTV Image Quality

The CF-H290L/I features HDTV and 170° angle of view. The combination of HDTV image quality and 170° angle of view supports detailed observation and facilitates lesion detection. What's more, the distal end diameter is the same as in the previous model.



### NBI (Narrow Band Imaging)

NBI in EVIS LUCERA ELITE provides twice the viewable distance of EVIS LUCERA SPECTRUM. The greatly improved performance of NBI opens up exciting new clinical applications and reinforces NBI's position as the standard of care for GI endoscopy.

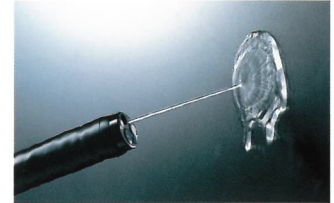


### RIT (Responsive Insertion Technology)

RIT combines three proprietary insertion tube technologies: HFT (High Force Transmission), PB (Passive Bending) and variable stiffness. These technologies are designed to facilitate complete colonoscopies by improving scope handling, insertability and ergonomics. PB helps EVIS LUCERA ELITE 290 Series scopes move through acute bends in the colon. HFT provides improved operator control for pushing, pulling and twisting maneuvers. Variable stiffness allows the physician to adjust the rigidity of OLYMPUS scopes as needed, by simply turning an adjustment ring on the scope control section.

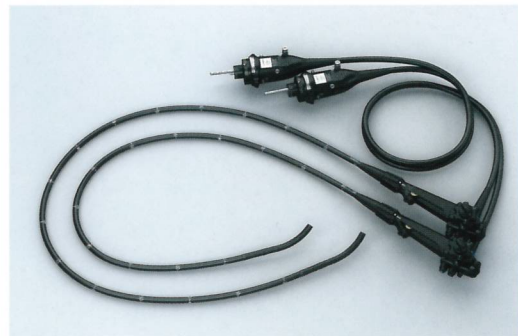
### Water Jet

Water jet function is standard on EVIS LUCERA ELITE routine colonoscopes. This technology helps to keep the mucosa clear during observation and treatment.



### Waterproof One-touch Connector

A new connector design minimizes the effort required for setup prior to and in between cases. In addition, it is fully submersible and eliminates the need for a water-resistant cap and the associated risk of an expensive repair due to accidental immersion.



## Specifications

Optical System	Field of view	170°
	Direction of view	Forward viewing
	Depth of field	5-100 mm
Insertion Section	Distal end outer diameter	12.2 mm
	Distal end enlarged	
	Insertion tube outer diameter	12 mm
Working length		L: 1680 mm I: 1330 mm

Instrument Channel	Channel inner diameter	3.2 mm	
	Minimum visible distance	3.0 mm from the distal end	
Bending Section	Direction from which endotherapy accessories enter and exit the endoscopic image		
		Up	180°
		Down	180°
		Right	160°
Total Length	L: 2005 mm I: 1655 mm		
	Compatible EVIS LUCERA System	Video System Center OLYMPUS CV-290 Xenon Light Source OLYMPUS CLV-290SL, CLV-290	

Specifications, design and accessories are subject to change without any notice or obligation on the part of the manufacturer.



OLYMPUS MEDICAL SYSTEMS CORP.  
Shinjuku Monolith, 2-3-1 Nishi-Shinjuku, Shinjuku-ku, Tokyo 163-0914, Japan

For a complete listing of sales and distribution locations visit:  
[www.olympus.com](http://www.olympus.com)