

OLYMPUS[®]

Your Vision, Our Future

COLPOSCOPE
OCS-500

Beyond The Colposcope – A Multi-Task Gyne-Imaging Center

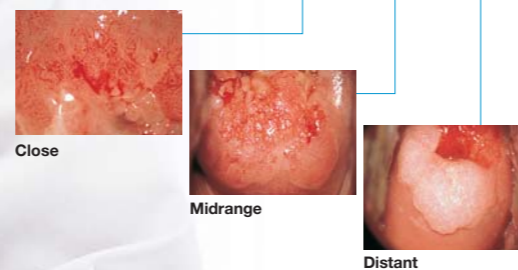


The OCS-500 Colposcope — The Key to More Efficient Office Gynecology

High quality digital image, extended magnification and smooth maneuverability

Refined Optical Performance

The OCS-500 incorporates optical focusing, instead of requiring you to move the colposcope body for sharp images within a working distance of 220 to 350 mm. In addition, non-step continuous zoom allows 6x zoom at variable distances for magnification from 2.7x - 23.4x.



Single-handed Operation

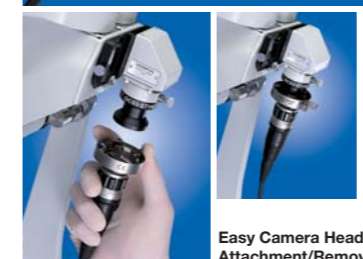
Several different control knobs are gathered close together, so you can adjust the view field, zoom, or focus with just one hand using either a left or right grip.



Outstanding system versatility for greater range of examination, recording and edit

Colposcopy and Hysteroscopy In a Single System

The OCS-500's video system and light source can also be used for hysteroscopy. Thanks to the adoption of an eyepiece mount, switching from colposcopy to hysteroscopy is quick and easy.

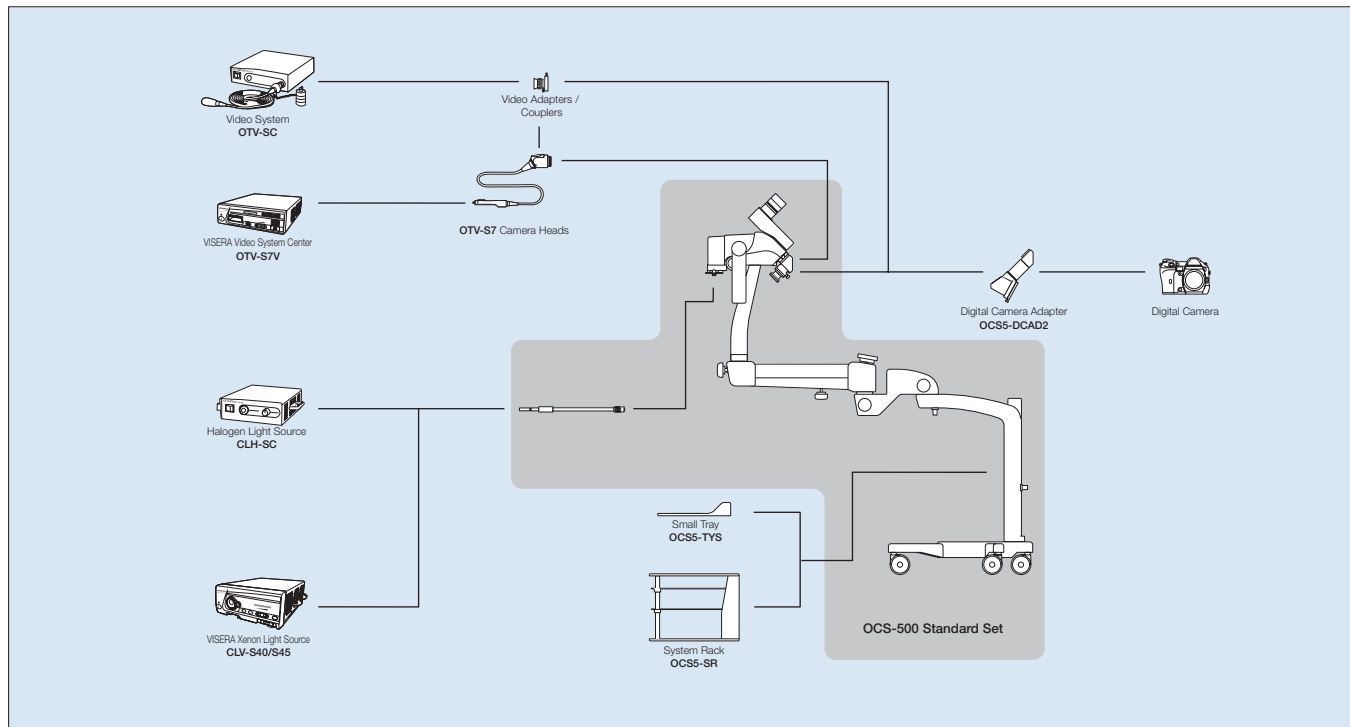


Digital Documentation

In addition to colposcopic image digital recording, hysteroscopic image digital recording is possible with digital camera. Using digital color photo printer, recorded images stored in SD memory cards can be printed in no time.



System Chart



OCS-500 Standard Set

- Zoom Microscope Body
- Balance Arm
- Horizontal Arm
- Stand
- Floorstand Base
- Light Guide
- Eyepiece Shape TV Mount
- TV Camera Adapter

Options

- CLH-SC Halogen Light Source
- OCS5-DCAD2 Digital Camera Adapter
- OCS5-TVAD1 TV Camera Adapter
- OCS5-SR System Rack
- OCS5-TYS Small Tray
- OCS5-LG Light Guide

Compatible Video Systems

- OTV-S7V VISERA Video System
- OTV-SC Video System

Please contact your nearest Olympus office for connectable camera heads, adapters and couplers.

Compatible Light Sources

- CLV-S40/S45 VISERA Xenon Light Source
- CLH-SC Halogen Light Source

OCS-500 Specifications

Operating Environment	Air Temperature	10 – 40°C (50 – 104°F)
	Humidity	30 – 85%
	Air Pressure	700 – 1060 hPa (0.7 – 1.1 kg / cm ² , 10.2 – 15.4 psia)
Size	Dimensions	600 mm dia. (Pedestal Base) x 1400 mm (Overall Height)
Eyepiece	Magnification	10X
	Field Number	22
	Diopter Adjustment	–5 – +5 m ⁻¹
Zooming	Drive System	Manual drive by knob rotation
	Zoom Ratio	1 : 6
Focusing	Focus System	Adjustable focal length
	Drive System	Manual drive by knob rotation
	Focus Adjustment Range	220 – 350 mm
Illumination	System	Light guide
	Filter	Detachable green filter
Magnifications		WD220 : 3.7 – 23.4X
		WD300 : 3.0 – 18.8X
		WD350 : 2.7 – 16.9X

Field Of View		WD220 : 58.5 – 9.3 mm
		WD300 : 73.1 – 11.6 mm
		WD350 : 82.4 – 13.1 mm
Floorstand	Support System	Floorstand
	Balancing System	Pantographic arm balancing using spring.
	Balance Adjustment Range	4.0 – 7.0 kg
	Balance Adjustment	Handle adjusted
	Binocular Tube Tilt	10 degrees upward and 30 degrees downward relative to the horizontal observation optical axis.
	Vertical Arm Movement Range	300 mm
Photography/ Cinematography Equipment	Arm Rotation Range	270°
	TV Camera	Connectable using a TV camera adapter (optional)
	Digital Camera	Connectable using a digital camera adapter (optional)

Specifications, design and accessories are subject to change without any notice or obligation on the part of the manufacturer.



OLYMPUS MEDICAL SYSTEMS CORP.
Shinjuku Monolith, 2-3-1 Nishi-Shinjuku, Shinjuku-ku, Tokyo 163-0914, Japan

For a complete listing of sales and distribution locations visit www.olympus.com