

**OLYMPUS**<sup>®</sup>

Your Vision, Our Future

**VISERA  
ELITE**

HD CAMERA HEAD

**CH-S190-08-LB**

HD ULTRA-LIGHTWEIGHT CAMERA HEAD WITH NBI



## Ultra-Lightweight Urology Camera

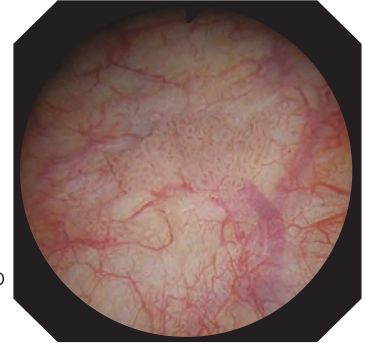
### Lightweight and Ergonomic

Ideal for urological procedures, this small, lightweight pendulum-style camera head is ergonomically designed to fit comfortably in the surgeon's hand, while reducing fatigue associated with long procedures.



### High Definition Image

With its new CCD, the CH-S190-08-LB boasts 55% more pixels than the previous generation HD camera head (1) and 150% more than the SD camera head (2). This creates high definition images that should help improved diagnostic and therapeutic capabilities.



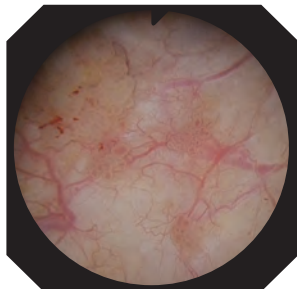
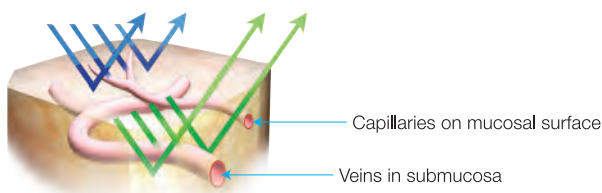
HDTV Image

(1) OTV-S7ProH-HD-L08E  
(2) OTV-S7H-1D-L08E

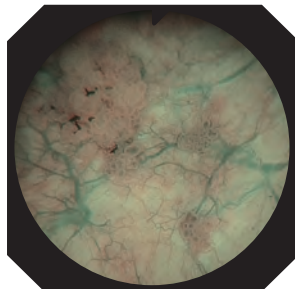
### Narrow Band Imaging (NBI)\*

Narrow Band Imaging (NBI) is the World's Only Patented Endoscopic Light Technology for enhancing the visualization of vascular structures without the use of dyes, drugs, or contrast agents. NBI, which is strongly absorbed by hemoglobin and penetrates only the surface of tissues, is ideal for highlighting areas of increased vascularity. As a result, under NBI, capillaries on the mucosal surface are displayed in brown on the monitor, and veins in the submucosa are displayed in cyan. NBI is simple to use. With no dyes or drugs, no time limit of effectiveness, and no added cost, NBI is an easy addition to your standard procedure work flow.

\* Available only with VISERA ELITE



Conventional image



NBI image

### HD CAMERA HEAD CH-S190-08-LB



#### Specifications

|   |   |   |
|---|---|---|
| Size  | Camera Head                                 | ø26 x 83 mm   |
|   | Cable                                       | ø3.3 mm x 3.5 m   |
|   | Weight                                      | 65 g (head part) 20 g (remote control part)                                   |
| Observation                                 | Pickup System                               | Interline type CCD solid-state image pickup                                   |
| Classification (electro-magnetic equipment) | Degree of protection against electric shock | Type BF   |
|   | Degree of protection against explosion      | The product should be kept away from flammable gasses.                        |
| Cleaning / disinfection, sterilization      | Cleaning / disinfection                     | Immersible in disinfectant solution   |
|   | Sterilization                               | Ethylene oxide gas and low-temperature hydrogen peroxide plasma sterilization |

### VISERA ELITE System



Video Processor  
OTV-S190  
Xenon Light Source  
CLV-S190

Specifications, design and accessories are subject to change without any notice or obligation on the part of the manufacturer.