

OLYMPUS[®]

Your Vision, Our Future

URETERO-RENO FIBERSCOPE

URF-P6/P6R

The Super-Slim Flexible Uretero-reno Fiberscope for Laser Lithotripsy



Flexible Ureteroscopy Just Got Smaller

Synergy of Olympus and Gyrus ACMI technology

As two of the world's leading innovators in the flexible ureteroscope market, Olympus and Gyrus ACMI have joined forces to advance ureteroscopy to the next level. The resulting synergy of URF by Olympus and DUR by Gyrus ACMI is taking the medical world by storm with an advanced new product, the URF-P6 super-slim Flexible Ureteroscope.

Making this super-slim flexible ureteroscope is ideal for laser lithotripsy.

Easy Access

Super-Slim Shaft

The URF-P6 is compatible with a 9.5 Fr access sheath, which helps the scope to be insert into smaller ureters. When using a 12 Fr access sheath, the narrow design leaves plenty of room for irrigation outflow, helping to ensure that the scope moves smoothly and that stone fragments can pass easily along side the scope while maximizing renal pressure.

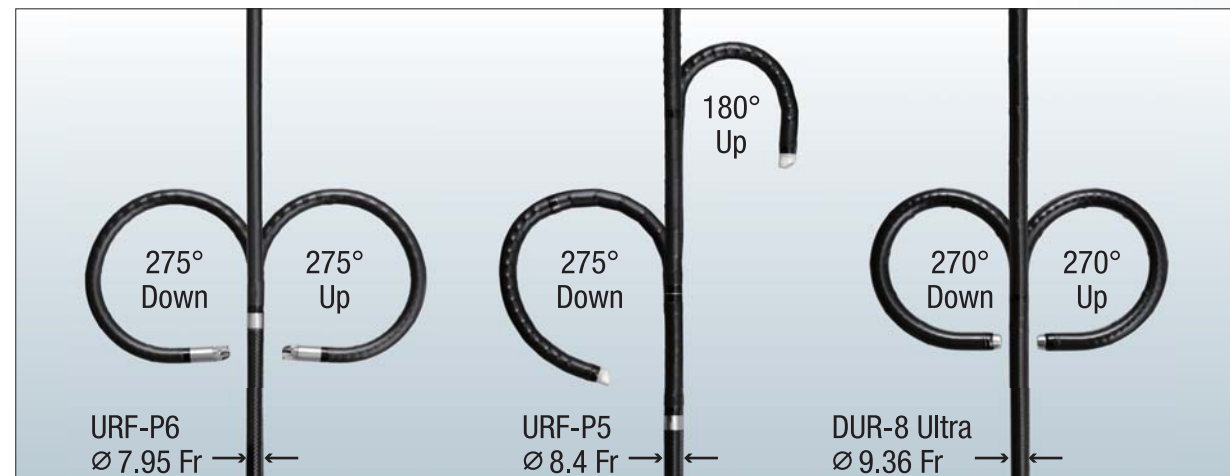
Stiff Shaft

Thanks to the adoption of Gyrus ACMI technology, the URF-P6's shaft is stiffer than older scopes*. The stiff shaft is designed for smooth insertion of the scope into ureter, providing easier access to the kidney. The torque stable shaft will help maximize control throughout the entire procedure.

* OES Uretero-Reno Fiberscope Olympus URF TYPE P5 etc.

Angulation

The 275° up / down angulation is designed to help easier access the stones in upper, mid and lower calyces even when working with a laser fiber.



4.9 Fr EvolutionTip

The 4.9 Fr distal tip was designed with Olympus' unique EvolutionTip to help ensure smooth scope insertion and navigation even through tight anatomy.

Evolutiontip



∅ 4.9 Fr
EvolutionTip

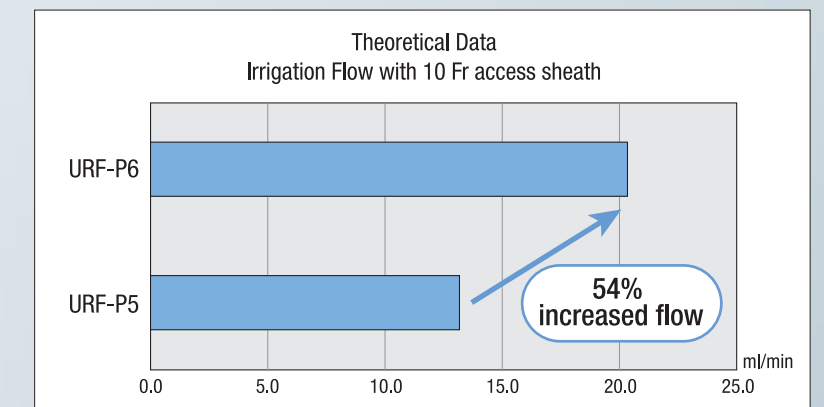
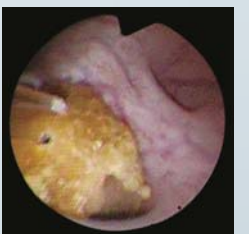
∅ 7.95 Fr
Super-Slim

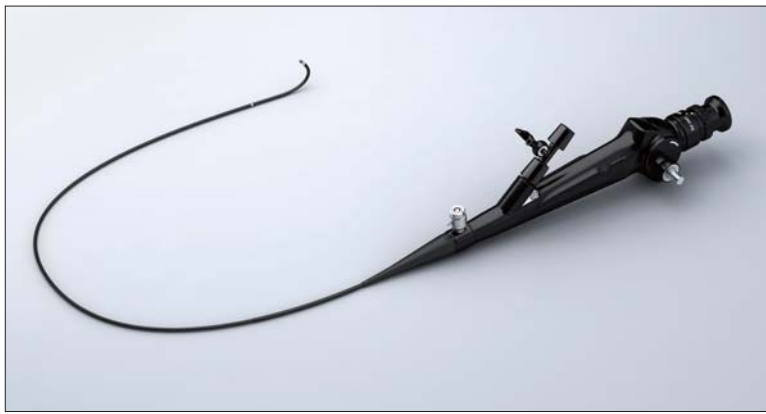
Clear Visualization

Excellent image quality even with slimmer design

The URF-P6 maintains the same high quality image that you would expect from Olympus despite the slimmer design. The built-in moiré filter reduces distortion and provides a sharp clear picture.

The 7.95 Fr super-slim shaft is designed for better irrigation with a 10 Fr access sheath, maximizing image quality during laser lithotripsy.





URF-P6/P6R Specifications

Optical System	Field of View	90°
	Direction of View	Forward Viewing
	Depth of Field	2 - 50 mm
Insertion Tube	Distal End Outer Diameter	4.9 Fr Evolution tip
	Insertion Tube Outer Diameter	7.95 Fr (2.65 mm)
	Working Length	670 mm
Instrument Channel	Inner Channel Diameter	3.6 Fr (1.2 mm)
Bending Section	Angulation Range	Up 275°/Down 275°
Total Length		1050 mm

Standard Set

Uretero-Reno Fiberscope OLYMPUS URF-P6	1	Channel-Opening Cleaning Brush MH-507	1
Biopsy Valve MAJ-579	10	Channel Cleaning Brush BW-15SH	1
Forceps / Irrigation Plug MAJ-891	1	Single Use Single-ended Cleaning Brush BW-400B	1
ETO Cap MB-156	1		

Endourology Products

Flexible Uretero-Reno Videoscope

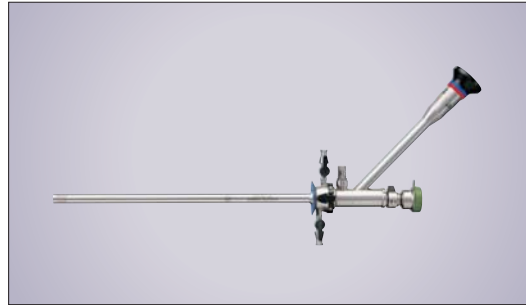


Uretero-Reno Videoscope Olympus URF TYPE V

Olympus chip-on-the-tip technology provides a moiré-free, bright image with high color reproduction without the need for a camera head attachment and it eliminates the need to focus.

URF-V	8.5 Fr distal end, 9.9 Fr insertion tube, 670 mm, 3.6 Fr channel
-------	------------------------------------------------------------------

Percutaneous Nephroscope



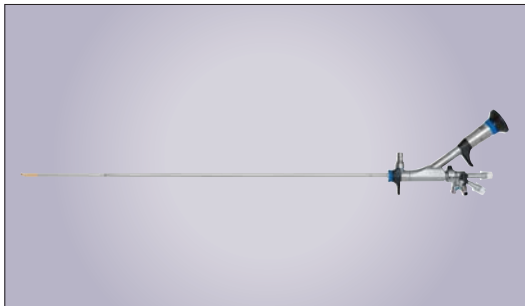
OES Pro High-Flow Nephroscope

By combining the latest hybrid lens technology with a high-flow sheath design, this percutaneous nephroscope offers exceptional image quality.

WA33036A	30° DOV, 4 mm channel, includes attachment A3342
----------	--------------------------------------------------

WA33037A	Outer sheath, 25 Fr, rotatable
----------	--------------------------------

Semi-Rigid Ureteroscope



The Olympus semi-rigid ureteroscope provides clear visualization with its fused quartz fiberoptic image bundle in an autoclavable design. The atraumatic tip is designed to help prevent perforation of the urinary tract.

Single Channel OES Pro Ureteroscope

WA29040A	angled-ocular, 7° DOV, 6.4/7.8 Fr x 430 mm, 4.2 Fr channel
----------	------------------------------------------------------------

WA29041A	angled-ocular, 7° DOV, 6.4/7.8 Fr x 330 mm, 4.2 Fr channel
----------	------------------------------------------------------------

WA29042A	angled-ocular, 7° DOV, 8.6/9.8 Fr x 430 mm, 6.4 Fr channel
----------	------------------------------------------------------------

WA29048A	straight-ocular, 7° DOV, 6.4/7.8 Fr x 430 mm, 4.2 Fr channel
----------	--------------------------------------------------------------

WA29049A	straight-ocular, 7° DOV, 6.4/7.8 Fr x 330 mm, 4.2 Fr channel
----------	--------------------------------------------------------------

Dual Channel OES 4000 Ureteroscope

WA02943A	angled-ocular, 7° DOV, 7.5 Fr x 430 mm, 3.6 Fr & 2.5 Fr channels
----------	------------------------------------------------------------------

WA02944A	straight-ocular, 7° DOV, 7.5 Fr x 430 mm, 3.6 Fr & 2.5 Fr channels
----------	--------------------------------------------------------------------

WA02946A	straight-ocular, 7° DOV, 7.5 Fr x 330 mm, 3.6 Fr & 2.5 Fr channels
----------	--------------------------------------------------------------------

Specifications, design and accessories are subject to change without any notice or obligation on the part of the manufacturer.

OLYMPUS

OLYMPUS MEDICAL SYSTEMS CORP.
Shinjuku Monolith, 2-3-1 Nishi-Shinjuku, Shinjuku-ku, Tokyo 163-0914, Japan

For a complete listing of
sales and distribution locations visit:
www.olympus.com