

OLYMPUS

Your Vision, Our Future

CYF-VH

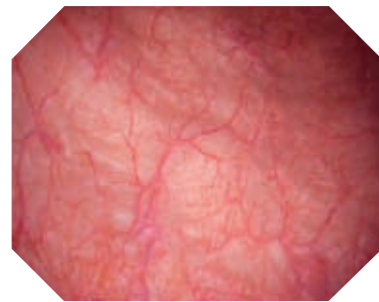
The world's first flexible HD cysto-nephro videoscope.



THE NEXT LEVEL OF ENDOSCOPIC IMAGING

High-Definition TV (HDTV)

The revolutionary CYF-VH is the first endoscope of its kind to provide a high-definition image in an endoscope this small.



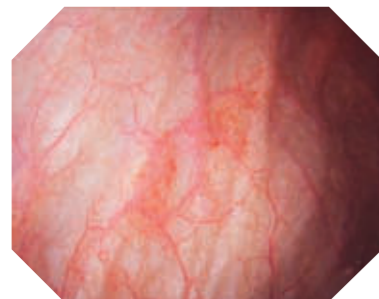
The cristal-clear view in the urethra improves detection and diagnosis of suspicious areas.



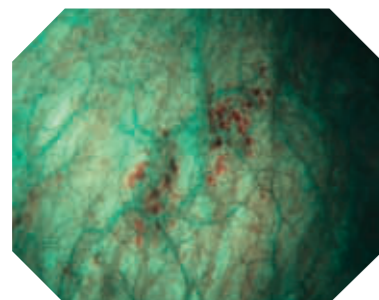
Already under white light, the CYF-VH allows a wider view and detailed vision, which is primarily important for all bladder cancer follow-up cystoscopies.

NBI (Narrow Band Imaging)

HD NBI potentially allows for a higher and improved detection rate of carcinoma in situ. In order to improve the diagnosis, the brightness of NBI was increased by 20% compared to CYF-V2.

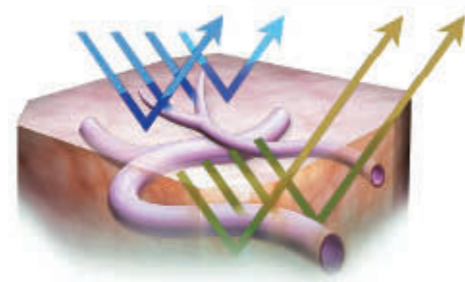


White light



NBI

NBI is an optical image-enhancement technology that improves the visibility of vessels and other tissue on the mucosal surface. NBI works by filtering the white light into specific light wavelengths, which are absorbed by hemoglobin and penetrate only the surface of human tissue. This provides improved visual contrast of the surface structures and fine capillary patterns of mucous membranes, which are normally difficult to distinguish.



IMPROVING PATIENT COMFORT – NEW ENDOSCOPE DESIGN

New EvolutionTip

In addition, the tip design improves light emittance and increases the light output by 150% (compared to the CYF-V2).



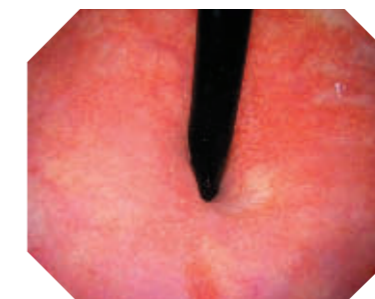
CYF-V2 tip



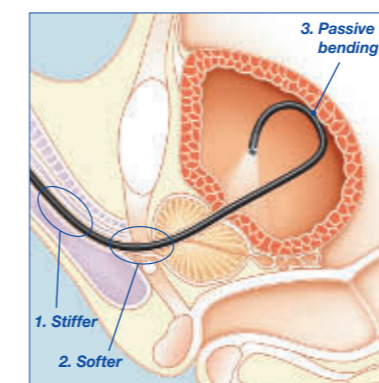
CYF-VH tip

Variable stiffness shaft

- To further improve patient comfort, the CYF-VH shaft varies in stiffness:
- Proximally (1), the shaft is stiffer to maintain control in the urethra
 - At mid-shaft (2), it is more flexible to minimise pressure and discomfort on sensitive anatomy
 - A distal passive bending section (3) allows the scope to bend even further and minimises the potential of damage to the endoscope during normal use



Suspicious regions within the delicate structures of the bladder neck can be easier identified with the help of the cristal-clear HD image of the CYF-VH.



Improved deflection

The CYF-VH bends 10° more in each direction with its 220° upward and 130° downward deflection, providing the ability to see and treat all areas of the bladder with ease.



Large field of view

The wide 120° field of view provides a panoramic inspection of the entire bladder from the bladder neck.

Ordering information

Videoscopes

CYF-VH	Flexible cysto-nephro videoscope
CYF-VHA	Flexible cysto-nephro videoscope with suction valve
CYF-VHR	Flexible cysto-nephro videoscope with reverse angulation

Standard set

Standard set includes one scope plus the following:

MAJ-891	Irrigation/Forceps plug (isolation type), 1/set
MAJ-579	Semi-disposable biopsy valve, 10/set
MAJ-209	Disposable suction valve (CYF-VHA only), 20/set
MAJ-1077	Suction cleaning valve (CYF-VHA only), 1/set
MH-507	Channel-opening cleaning brush, 1/set
BW-15B	Channel cleaning brush, 1/set
MAJ-1538	Sterilisation cap, 1/set

EndoTherapy accessories

FD-7C-1.B	Hot biopsy forceps
FB-19CR-1	Rotatable biopsy forceps
FB-19SX-1	Biopsy forceps
CD-6C-1	Biopsy forceps
CD-6C.B	Coagulation electrode
FG-38SX-1	Grasping forceps
FG-53SX-1	Grasping forceps
SD-7C.B	Electrosurgical snare
SD-18C.B	Electrosurgical snare
FG-24SX-1	Grasping forceps
EGBPS-Y*	Adjustable biopsy port seal for accessories up to 9 Fr, 5/box

* Supplied sterile, single-use, disposable

Specifications

Optical system	Field of view	120°
	Direction of view	Forward-viewing (0°)
	Depth of field	3–50 mm
Insertion tube	Distal end, outer diameter	8.1 Fr (2.7mm)
	Insertion tube, outer diameter	16.5 Fr (5.5 mm)
	Working length	380 mm
Instrument	Inner channel, diameter	6.6 Fr (2.2 mm)
Bending section	Angulation range	220° upwards/130° downwards
Total length		660 mm

EndoTherapy accessories



Hot biopsy forceps
FD-7C-1.B



Rotatable biopsy forceps
FB-19CR-1



Biopsy forceps
FB-19SX-1



Biopsy forceps
FB-15C-1



Coagulation electrode
CD-6C-1



Grasping forceps
FG-38SX-1



Grasping forceps
FG-53SX-1



Electrosurgical snare
SD-7C-1.B/SD-18C-1.B



Four-wire basket forceps
FG-24SX-1

Specifications, design and accessories are subject to change without any notice or obligation on the part of the manufacturer.