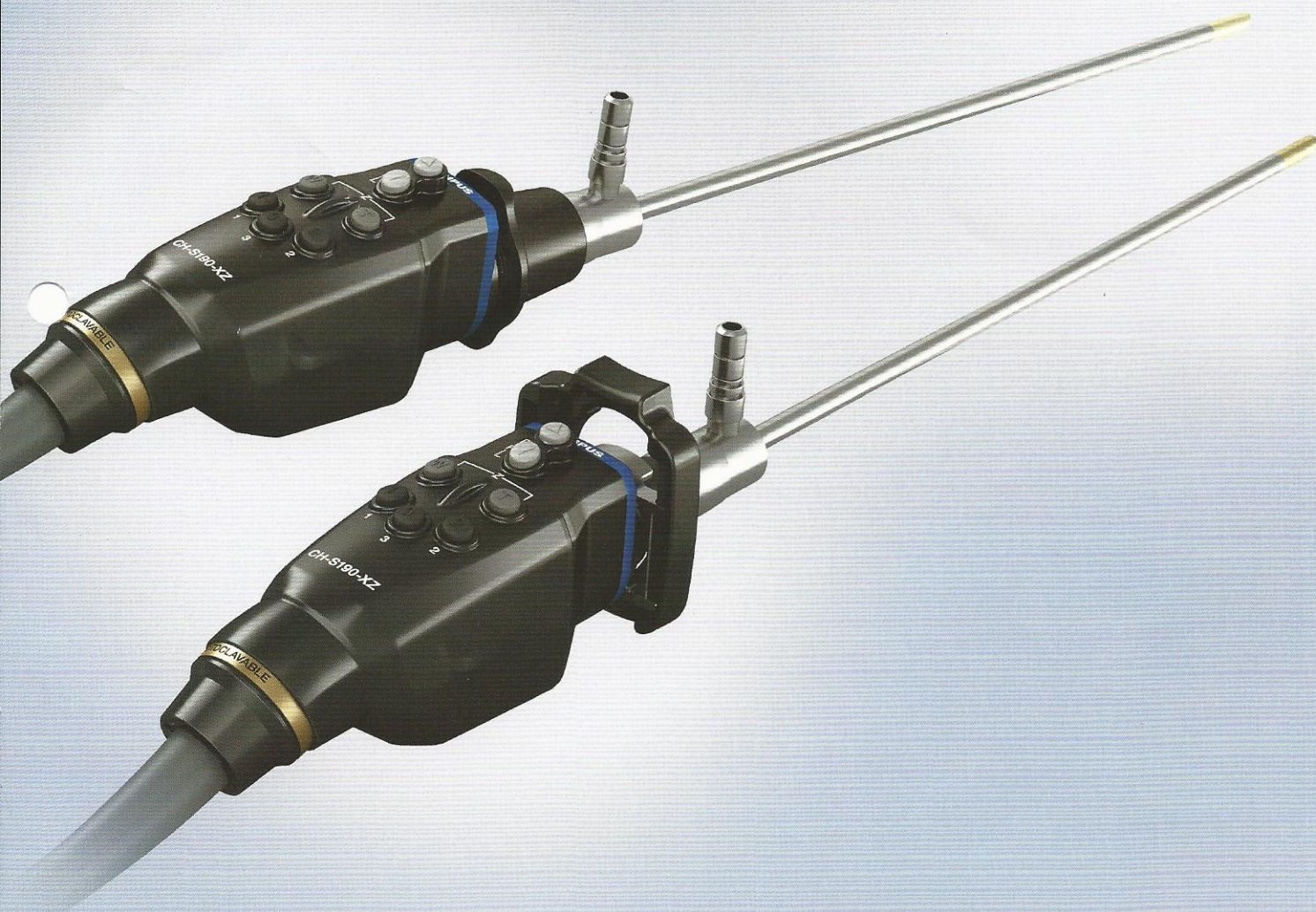


OLYMPUS[®]

Your Vision, Our Future

HD AUTOCLAVABLE CAMERA HEAD

Full HD 3CCD Camera Head



OLYMPUS CH-S190-XZ-E

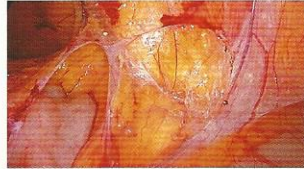
OLYMPUS CH-S190-XZ-Q



Main Features

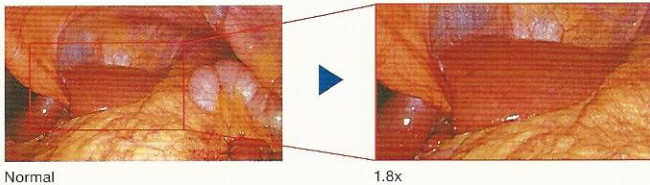
Full HD 3CCD

Full HD 3CCD delivers high definition and exceptional image quality supporting your operation with finer details.



Enhanced Resolution and Control

Offers full HD resolution with excellent color reproduction. The camera head incorporates Power Zoom and Power Focus that you can control with one hand.



Normal

1.8x

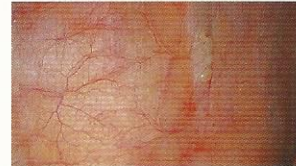
Autoclavability

Autoclavable Full HD 3CCD camera head provides a cost-effective reprocessing option.



NBI (Narrow Band Imaging)

NBI is a proprietary optical image enhancement technology that is only available on Olympus products. NBI enhances the visualization of vessels and other tissues on the mucosal surface and is 20% brighter compared to previous models.



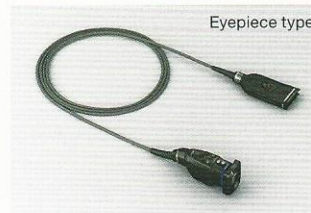
White Light



NBI

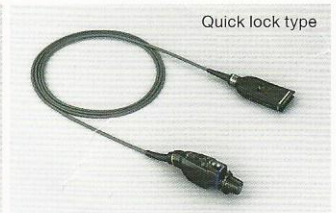
Three Fully Programmable Remote Switches

Three switches on the control section allows you to program frequently used functions for convenient remote control.



Eyepiece type

CH-S190-XZ-E



Quick lock type

CH-S190-XZ-Q

Specifications

Size	Camera head	Dimensions (W x H x D)	Eyepiece type: 50 x 63 x 142 mm Quick lock type: 45 x 58 x 161 mm
	Cable	Weight	350 g
Observation	Pickup system		0.85 cm/0.33 inches solid-state image pickup
	Magnification ratio		Focal distance f=15.8 – 31.3 mm
Cleaning/Disinfection/Sterilization	Cleaning/disinfection		Immersible in disinfectant solution.
	Sterilization		Autoclave/ETO
Classification (electro-medical equipment)	Degree of protection against electric shock		TYPE BF
	Degree of protection against explosion		The product should be kept away from flammable gases.

Specifications, design and accessories are subject to change without any notice or obligation on the part of the manufacturer.



OLYMPUS MEDICAL SYSTEMS CORP.
Shinjuku Monolith, 2-3-1 Nishi-Shinjuku, Shinjuku-ku, Tokyo 163-0914, Japan

For a complete listing of sales and distribution locations visit:
www.olympus.com